

✦ GIVING



Wits University  
**Donald Gordon**  
Medical Centre

# Training the next generation of medical experts



**DR. SUE TAGER**

CEO | Wits University Donald Gordon Medical Centre



**At Wits University Donald Gordon Medical Centre (WDGMC), we are proud to be training highly skilled medical experts, forming an integral part of the current Wits training platform.**

Recognising there is a critical shortage of medical experts in South Africa, WDGMC is committed to addressing this need. Our multi-disciplinary model of care is the ideal platform for the training of medical experts. Our goal is that these experts will go on to train the next generation, so that quality patient care remains accessible in South Africa.

To-date, WDGMC has used its profits to fund its training programme. However, our impact is limited by the profits we are able to generate. We are immensely grateful for the generous contributions we receive that enable us to expand our training programme. We are unique in the South African context in that we not only fund training, but also provide a formal, accredited training platform for medical experts. Our wish is that we can continue to do so and expand our impact, with your support.

## South Africa has a critical shortage of specialist skills

At present, there are less than 10 highly skilled medical experts per 100 000 people in the country. When compared to global benchmarks, it is clear that this puts us at a distinct disadvantage.

The availability (or lack thereof) of quality medical care at every level has a direct impact on all South Africans, especially our ability to attract and retain professionals in all sectors.

AT PRESENT, THERE ARE LESS THAN

**10 to 100 000**

MEDICAL EXPERTS

SOUTH AFRICAN PEOPLE

## WDGMC is the right partner for the future of South Africa's healthcare

OVER THE LAST **20 YEARS** WE HAVE...

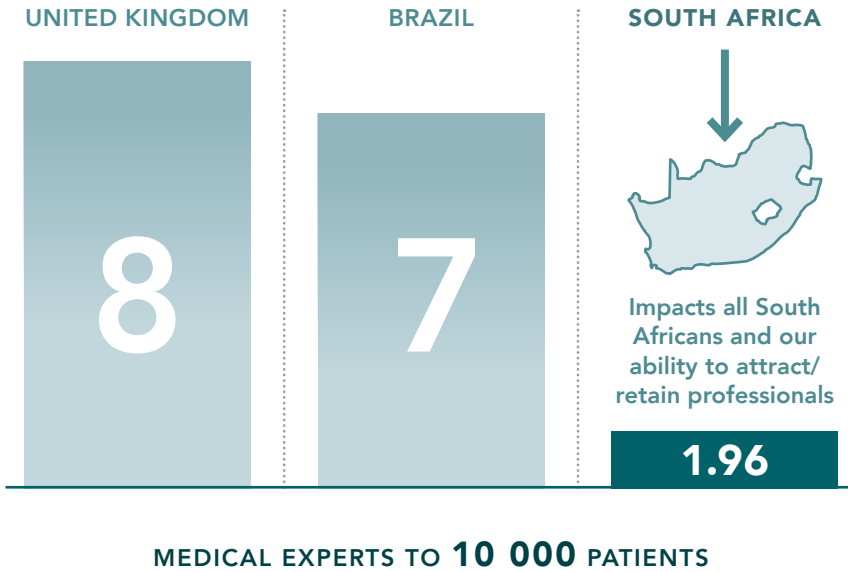


2002



Operated a  
**SELF-SUSTAINING,  
PROFITABLE**  
hospital

**Availability of South African medical experts compared to global benchmarks:**



MEDICAL EXPERTS TO **10 000** PATIENTS



Implemented an integrated **MULTIDISCIPLINARY MODEL OF CARE** that is scalable and replicable



Delivered **INNOVATIVE AND ACCOUNTABLE CARE** to patients and their families

**25** research papers published p/a

Created an **ENVIRONMENT FOR RESEARCH** within the private sector



A fellowship at WDGMC is like standing on the shoulders of giants and learning their ways.

**DR. TINEVIMBO MAKOTOSVANA**

Specialist Anaesthesiologist and Fellow in Critical Care



# Hear from our experts...



## PROF. ALISHA WADE

Specialist Physician  
and Endocrinologist



When I think of WDGMC, I immediately think: **innovative, multi-disciplinary and responsive leadership.** I am particularly excited by our capacity for innovation and thinking about how we can do things differently to improve the experience for patients and providers.



## PROF. MARTIN SMITH

Surgical  
Gastroenterologist

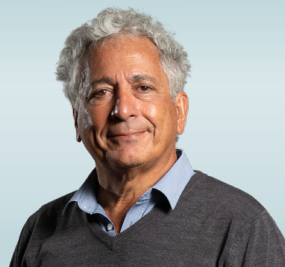


The WDGMC has always represented a 'laboratory' in that it offered the University an opportunity to explore alternative funding models for the delivery of specialist health care and to contribute to developing an equitable health delivery service which could contribute to universal access. It offered an opportunity to experience efficient well-resourced services with an opportunity to work with the best in all fields and thereby develop a comprehensive multidisciplinary approach to the delivery of excellent care in a tertiary/quaternary setting. It was the art of the possible.

As the Academic Head of Surgery, WDGMC offers me the opportunity to broaden the teaching platform, to ensure that valuable competencies are imparted to the fellows and registrars who rotate through the hospital.

### **Moving forward the WDGMC can and will lead the future growth of our training platform.**

As it develops its own research capacity its integration into the academic platform will be enhanced and the cross subsidization of the public sector will give it a central position in the future of speciality care at tertiary and quaternary level. It will continue to serve as the standard that all services will have to achieve. It will lead the way into new funding models for healthcare and ensure that what is developed and learnt at the WDGMC will be of value to all South Africans and not just those with privilege and private health insurance.



## PROF. DAMON BIZOS

Surgical  
Gastroenterologist



**I am passionate about the teaching and training of people.** WDGMC excites me because of the high quality of our medical experts, which is supported by significant training and teaching. Our accreditation and privileging system is unique.



## DR. LLIAM BRANNIGAN

Head of  
Critical Care



I joined WDGMC as a registrar and was immediately attracted to **the promise of expert patient care** that was embedded in this place. WDGMC models what our standard of healthcare should look like in South Africa; it takes a stand against mediocrity and negativity.



**DR. NOMSA NKOSI**  
Colorectal Surgeon

**PROF. GEORGIA DEMETRIOU**  
Specialist Oncologist

**PROF. WILLY VANGU**  
Nuclear Medicine Specialist

**PROF. ADAM MAHOMED**  
Specialist Gastroenterologist



WDGMC is unique in that you're **working with like-minded, forward-thinking individuals who are at the top of their respective fields**. There is a huge cross-pollination of knowledge and information across disciplines that improves our practice of medicine, and ultimately leads to better patient care and outcomes.



**Holistic state-of-the-art care** given at WDGMC by a family of health care workers.



My career has been a whirlwind of challenges and success, all of which has led me here - **South Africa's very own premiere medical institute where driven, dedicated and talented medical experts walk these halls**. It is my greatest honour to be regarded as part of this group and to be at WDGMC, an institution that at its core, mirrors my own mission of providing the best medical treatment and care to patients.



A little over 20 years ago, I vividly remember being involved in weekly meetings with the management of the Kenridge hospital. Nuclear medicine was among the very first specialised units to be born at WDGMC and has grown to become part of the daily management of our patients - having evolved to include digital PET/CT technology today - in the very same hospital that performed the first clinical PET imaging in South Africa in 2004.

I am proud to be part of this success story. I am poised to celebrate even further successes with the hospital that I call 'home', with its **philosophy that puts the patient at the centre of everything**.

# How is WDGMC making an impact?



## We retain highly skilled medical experts to train the next generation

We have built a unique training platform, training the next generation of highly skilled medical experts, providing quality patient care and conducting ongoing clinical research to improve patient care.

## Due to our integration with the Wits training platform...

For every **SPECIALIST (REGISTRAR) TRAINING POST** we fund:



# 24 trainees

get the opportunity to receive **A PERIOD OF TRAINING AT OUR CENTRE**

For every **SUB-SPECIALIST TRAINING POST** we fund:



# 3 sub-specialists

on average, get the opportunity to receive **A PERIOD OF TRAINING AT OUR CENTRE**

FROM 2007:

over

# 600



trainees

We have been able to provide a **PERIOD OF UNIQUE TRAINING AT WDGMC TO OVER 600 SPECIALIST AND SUB-SPECIALIST TRAINEES**



of the medical experts we have funded **REMAIN WITHIN THE BORDERS OF SOUTH AFRICA**

We've developed **SOUTH AFRICA'S FIRST AND ONLY LIVING DONOR LIVER TRANSPLANT PROGRAMME**





# How you can be part of this change

Your generous contributions will directly support the future of medical care in South Africa, including the following initiatives:



**TRAINING OF SPECIALISTS AND SUB-SPECIALISTS IN A VARIETY OF DISCIPLINES IN SOUTH AFRICA, FOR SOUTH AFRICA**



**INNOVATIVE TECHNOLOGIES**



**ACADEMIC RESEARCH**

WDGMC operates on a self-sustaining model, in which most day-to-day expenses are covered by the profits of the centre. We are committed and passionate about doing more to help our country. In order to expand our training, patient care, innovation and research, we are looking for your generous support.

---

## How you can start giving

If you would like to give a donation under R10 000, please visit our website, [dgmc.co.za](http://dgmc.co.za) for more details.

For more sizable donations, we would love to set up a private consultation with you to explore how you can be part of the change we are making.

**CONTACT US on 011 356 6000 or [sue.tager@mediclinic.co.za](mailto:sue.tager@mediclinic.co.za)**

When you give to WDGMC, you will receive a tax certificate in accordance with Section 18A.



As Wits University celebrates our centenary we also celebrate the success of Wits University Donald Gordon Medical Centre and see it as a critical investment in the future of our country.

**PROF. ZEBLON VILAKAZI**

Wits University Vice Chancellor and WDGMC Board Member



# 20

2002  
2022

We celebrate 20 years of Wits University  
Donald Gordon Medical Centre



[www.dgmc.co.za](http://www.dgmc.co.za) | t: 011 356 6000